

**PHYSICAL TRACES ASSOCIATED WITH UNIDENTIFIED FLYING
OBJECTS
An Interim Report**

**RESULTS OF PROCESSING DATA
1490 - 2004**

Ted R. Phillips
CENTER FOR PHYSICAL TRACE RESEARCH
archaeoanom@inter-linc.net

INTRODUCTION

This report presents a statistical analysis of data given in 3,059 reports involving observations of anomalous phenomena or objects on or near the ground resulting in physical residues generated by the observed phenomena or objects. These observations took place in 91 countries between 1490 and 2004.

The analysis permits certain regularities of these phenomena to be brought out. The data indicates there is a certain type of phenomenon which shows stable statistical properties.

This research began in 1968 and after 36 years it is yet premature to consider the nature of these phenomena on the basis of the data presented to date. The developments of methods of obtaining more reliable data and expansion of the initial information used will result in a database of the most important piece of the UFO puzzle - physical evidence.

At this point there seems to be no relation to the more popular crop circles which are much larger and complex than UFO landing sites. The current problem is the inclination on the part of investigators to identify possible landing sites as crop circles - if it's circular, it must be a crop circle.

SUGGESTED FUTURE RESEARCH

To obtain more definite conclusions, more reliable and detailed data must be obtained. These events must be well documented and sampled for laboratory analysis. There needs to be a central repository for landing/physical evidence events. Currently, the data is scattered among numerous investigators in many countries.

A central repository should produce interim reports to be available to the general public and serious investigators. This will produce new data and a much more complete database. The entire database should be available in some form as physical trace events will give us the most substantial evidence for - or against - the existence of Unidentified Flying Objects.

| | | |
|-------------|------------|--------|
| Pre 1900 | 24 cases | 0.78% |
| 1900 - 1939 | 22 cases | 0.72% |
| 1940 - 1949 | 28 cases | 0.92% |
| 1950 - 1959 | 303 cases | 9.91% |
| 1960 - 1969 | 534 cases | 17.46% |
| 1970 - 1979 | 1109 cases | 36.25% |
| 1980 - 1989 | 498 cases | 16.28% |
| 1990 - 1999 | 435 cases | 14.22% |
| 2000 - 2004 | 106 cases | 3.46% |

Fig. 1 - DISTRIBUTION OF EVENTS BY YEAR DISTRIBUTION

| | | |
|--------|------------|--------|
| 1954 | 105 CASES | 3.43% |
| 1969 | 133 CASES | 4.35% |
| 1973 | 159 CASES | 5.20% |
| 1974 | 125 CASES | 4.01% |
| 1975 | 147 CASES | 4.81% |
| 1976 | 114 CASES | 3.73% |
| 1977 | 119 CASES | 3.90% |
| 1979 | 121 CASES | 4.00% |
| 1980 | 103 CASES | 3.37% |
| TOTALS | 1126 CASES | 36.80% |

Fig. 2 - PEAK YEAR

| | |
|------|-----------|
| 2300 | 256 cases |
| 2000 | 251 cases |
| 2100 | 245 cases |
| 2200 | 200 cases |
| 0200 | 142 cases |
| 2400 | 137 cases |
| 1900 | 137 cases |
| 0400 | 124 cases |
| 1700 | 119 cases |
| 1800 | 98 cases |

Fig. 3 - PEAK TIME DISTRIBUTION (local times)

| | |
|---------------|--------------------|
| United States | 979 cases |
| France | 245 cases |
| Canada | 214 cases |
| Brazil | 199 cases |
| Italy | 184 cases |
| Australia | 168 cases |
| England | 168 cases |
| New Zealand | 153 cases |
| Argentina | 122 cases |
| Venezuela | 93 cases |
| | 2525 cases (82.5%) |

Fig. 4 - PEAK DISTRIBUTION COUNTRIES

| | |
|------------|----------|
| Missouri | 43 cases |
| Iowa | 39 cases |
| Illinois | 38 cases |
| California | 35 cases |
| Indiana | 33 cases |

Fig. 5 - PEAK DISTRIBUTION STATES

Multiple Witness Events: 40.4% (1,236 cases)

Occupants/Beings Reported: 23.9% (731 cases)

More than one being seen: 63.2% (461 cases)

Being described as small: 57.1% (417 cases)

| | |
|----------------|-------|
| Circular | 57.2% |
| Oval | 21.2% |
| Sphere | 14.6% |
| Cylinder/Cigar | 6.0% |
| Various Shapes | 1.0% |

Fig. 6 - SHAPE DISTRIBUTION OF OBJECTS

| | |
|------------|-------|
| Metallic | 59.6% |
| Red | 11.0% |
| White | 10.1% |
| Orange-Red | 5.5% |
| Orange | 3.7% |
| Yellow | 3.7% |
| Blue-White | 2.8% |
| Green | 2.8% |
| Gold | 0.8% |

Fig. 7 - OBJECT COLOR

| | |
|--------------|-------|
| Sound Heard | 9.3% |
| Whistling | 31.1% |
| Humming | 22.6% |
| Hissing | 11.3% |
| Buzzing | 11.1% |
| Beeping | 10.0% |
| “Electronic” | 10.0% |
| Roaring | 4.9% |

Fig. 8 - SOUND RELATED TO OBJECT

Graph below indicates the object dimensions as estimated by witnesses. Dimensions in meters are as follows;

A: one - three

C: eight - twelve

E: seventeen - twenty-one

G: twenty-five +

B: four - seven

D: twelve - sixteen

F: twenty-two - twenty-five

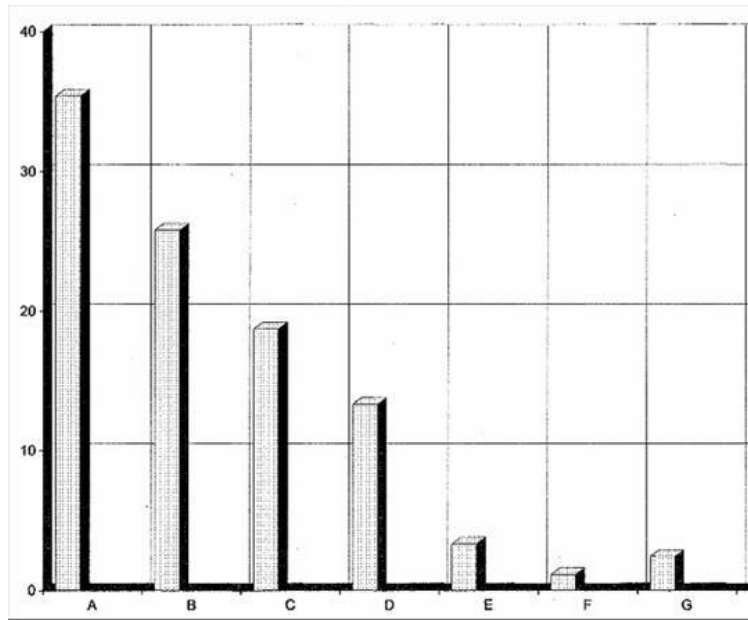


Fig. 9 - ESTIMATED OBJECT DIMENSIONS

Graph below indicates the duration of the observations. Duration in minutes as follows:

A: Less than 1 minute

B: 1 - 2 minutes

C: 2 - 5 minutes

D: 5 - 10 minutes

E: 10 - 20 minutes

F: 20 - 30 minutes

G: 30 minutes - 1 hour

H: one hour +

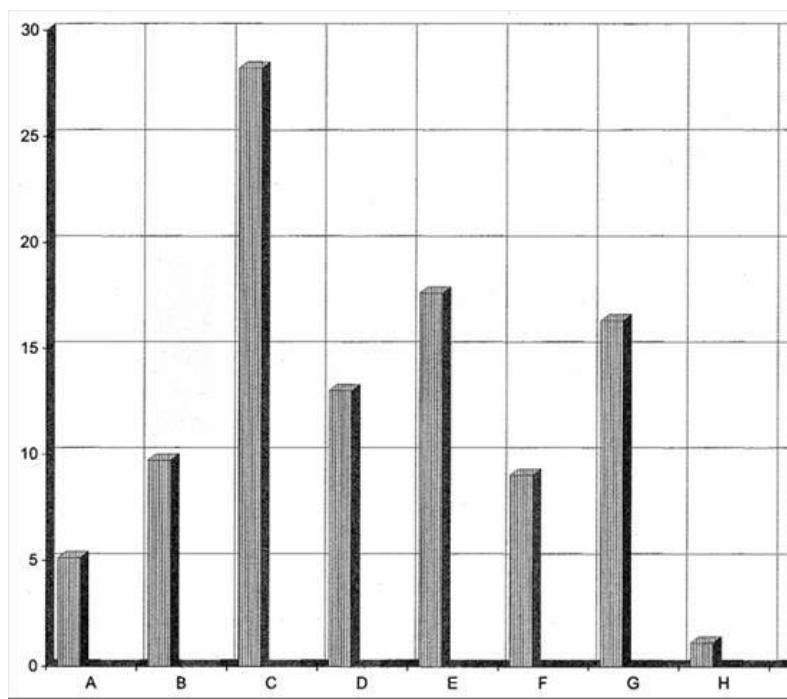


Fig. 10 - DURATION OF OBSERVATION

| | |
|-----------|-------|
| Circular | 78.7% |
| Oval | 15.2% |
| Irregular | 6.1% |

Fig. 11 - CONFIGURATION OF PRIMARY TRACES

| | |
|------------|-------|
| Burnt | 47.7% |
| Depressed | 40.0% |
| Dehydrated | 12.3% |

Fig. 12 - CONDITION OF PRIMARY SITE

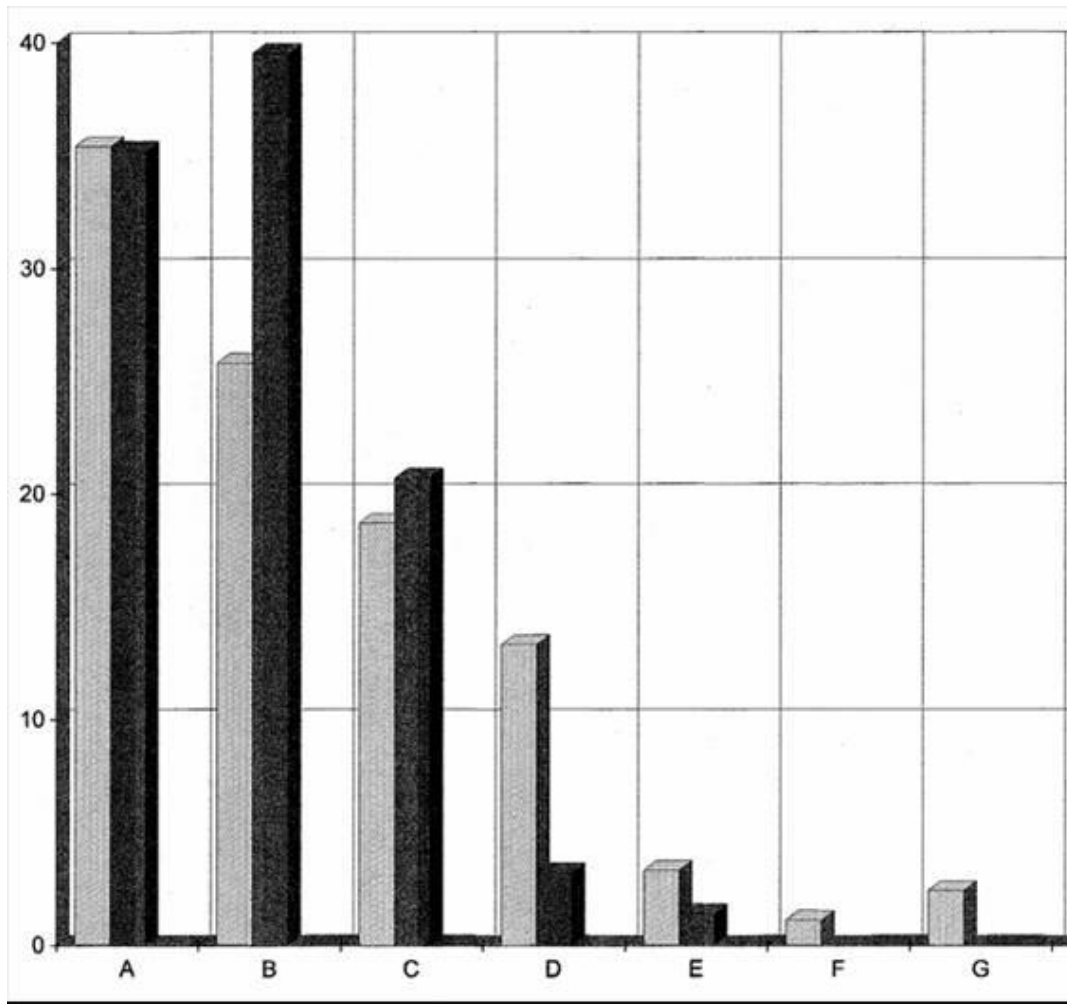


Fig. 13 - OBJECT (light gray) & SITE DIMENSIONS in meters

A: 1 - 3 B: 4 - 7 C: 8 - 12 D: 12 - 16 E: 17 - 21 F: 22 - 25 G: 25+

| | |
|-------------------------|------|
| Human Effects | 5.3% |
| Animal Effects | 2.8% |
| Vehicle Damage | 6.5% |
| Structure Damage | 1.2% |
| Footprints | 7.7% |
| Tree Damage | 9.1% |
| Radiation | 1.7% |
| Electromagnetic Effects | 7.6% |
| Angel Hair | 8.9% |
| Fragments Recovered | 8.1% |
| Liquid Residue | 2.0% |
| White Residue | 3.8% |

Fig. 14 - SECONDARY TRACES

| | |
|----------|-------|
| Imprints | 31.1% |
| Three | 69.9% |
| Four | 28.3% |
| Five | 0.4% |
| Six | 1.4% |

Fig. 15 - LANDING GEAR IMPRINTS

SUMMARY

Currently UFO landing events with physical traces are occurring at a rate of 2.2 events per month. Prime time viewing for such an event would be between 8 pm and midnight with secondary peaks at 2 am and 4 am. Best location would be Missouri, Iowa or Illinois.

Objects generating traces are most often circular, metallic in color. There are three primary types of object observed.

Type 1: One to three meters in diameter, disc or spherical in shape. These objects tend not to make ground contact but hover close to the surface, leaving behind burnt or dehydrated circular effects.

Type 2: Four to seven meters in diameter, oval or disc-shaped. Landing with imprints, either 3 or four. Sites are burnt or depressed and circular to oval in shape.

Type 3: Eight to twelve meters in diameter, disc-shaped with 3 landing legs, leaving burnt or depressed sites.

Most trace events have an observation window of 2 to 5 minutes with the object less than 20 meters away.

Eight in ten sites are circular, burnt or depressed. 91% of site diameters between 1 and 12m. 1 - 3m: 33%, 4 - 7m: 37%, only 3% 17m or greater.